



Formed By a Partnership Between:

- Jackson Purchase RC&D Foundation, Inc.
- Kentucky Division of Water-Natural Resources and Environmental Protection Cabinet.
- Paducah Water Works

The Four Rivers Basin Team includes stakeholders from regulatory agencies, local governments and utilities, academic institutions, local industries, wildlife, agriculture and forestry agencies, and local conservation groups all dedicated to protecting and enhancing our water quality in the Four Rivers Region.

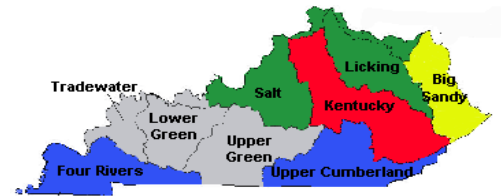


Stakeholders from the Four Rivers Basin Team meet bi-monthly.

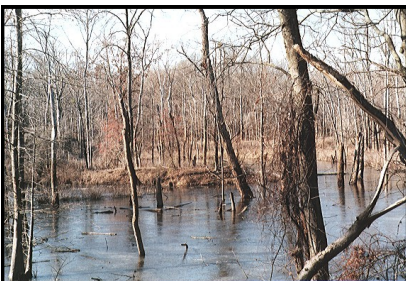
*The mission of the Four Rivers Basin Team is to coordinate and integrate programs, tools and resources available in order to protect, maintain and restore the ecological composition, structure and function of watersheds in the Four Rivers Region of Kentucky.*

### Background Information about the Four Rivers Region of Kentucky

- The Four Rivers Region is located in Western Kentucky and includes all or parts of 17 different counties
- Includes two major impoundments: Kentucky and Barkley Lakes



Map showing the different basin management units of Kentucky.



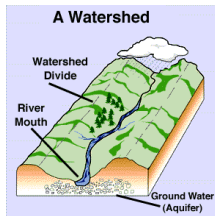
Wetlands in Marshall County provide essential watershed functions, including water purification and wildlife habitat.



The Four Rivers Region is often described as rolling farm country.

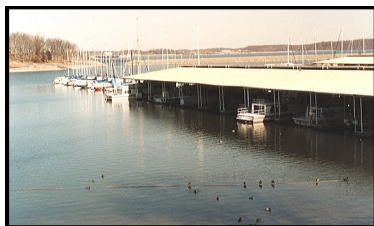
- Includes the Lower Cumberland River Basin, the Lower Tennessee River Basin, and tributaries in the Jackson Purchase Region that drain into the Ohio and Mississippi Rivers.
- Region drains 4,703 square miles of Kentucky (approximately 11.6% of the drainage area for the entire state).
- Region includes 7,259 miles of streams, with approximately 75% of assessed streams fully meeting Kentucky Water Quality Standards.
- Region includes many karst landscapes, that can greatly affect water movement and quality.
- Major land uses in the region include agricultural areas, forested areas and urban/built-up areas.

## Why Is a Watershed Important to Me?



- A watershed is a geographic area where all the water running off the land drains to a particular river or stream.
- As water drains to a particular river or stream, sediment and other contaminants from the land are added to the water.

- Water from our rivers and streams have many uses, including industrial, recreational, agricultural, municipal and domestic uses.
- Water plays an important role in all aspects of our daily lives, consequently, it is important to main and protect our watersheds.



A popular activity in the Four Rivers Region includes boating on the two major impoundments, a recreational use of our waters.



Four Rivers Watershed Watch Volunteers.

## How Can I Help?

- Sign up for Four Rivers Watershed Watch, a group of volunteers who collect samples for water quality analyses and conduct annual environmental surveys of the rivers and streams in our area.
- Prevent non-point source pollution by keeping storm drains free of debris, properly disposing of chemicals, controlling soil erosion on your property, properly maintaining septic systems, using low phosphorus detergents and cleaners, properly using and disposing of pesticides and fertilizers.



- For more information on how you can help or about partnering with the Four Rivers Basin Team on a project, please contact the Four Rivers Basin Team watershed coordinator, Maggie Morgan.

## Our Stakeholders:



## Four Rivers Basin Team Wish List Projects

- Environmental education and public outreach
- Riparian and wetland restoration
- Construction and agriculture related BMP implementation
- Well plugging and education
- Clarks River stream gaging stations
- Sinkhole restoration and education

If you would like more information about the Four Rivers Basin Team and our projects, please contact Maggie Morgan at the number listed below, or check out our state hosted website at [http://www.watersheds.ky.gov/basins/four\\_rivers/](http://www.watersheds.ky.gov/basins/four_rivers/)



Four Rivers Basin Team  
1000 Commonwealth Drive  
Mayfield, KY 42066  
Phone: (270) 559-4422

Email: [maggie.morgan@jpf.org](mailto:maggie.morgan@jpf.org)