

LU-1: Existing Land Use

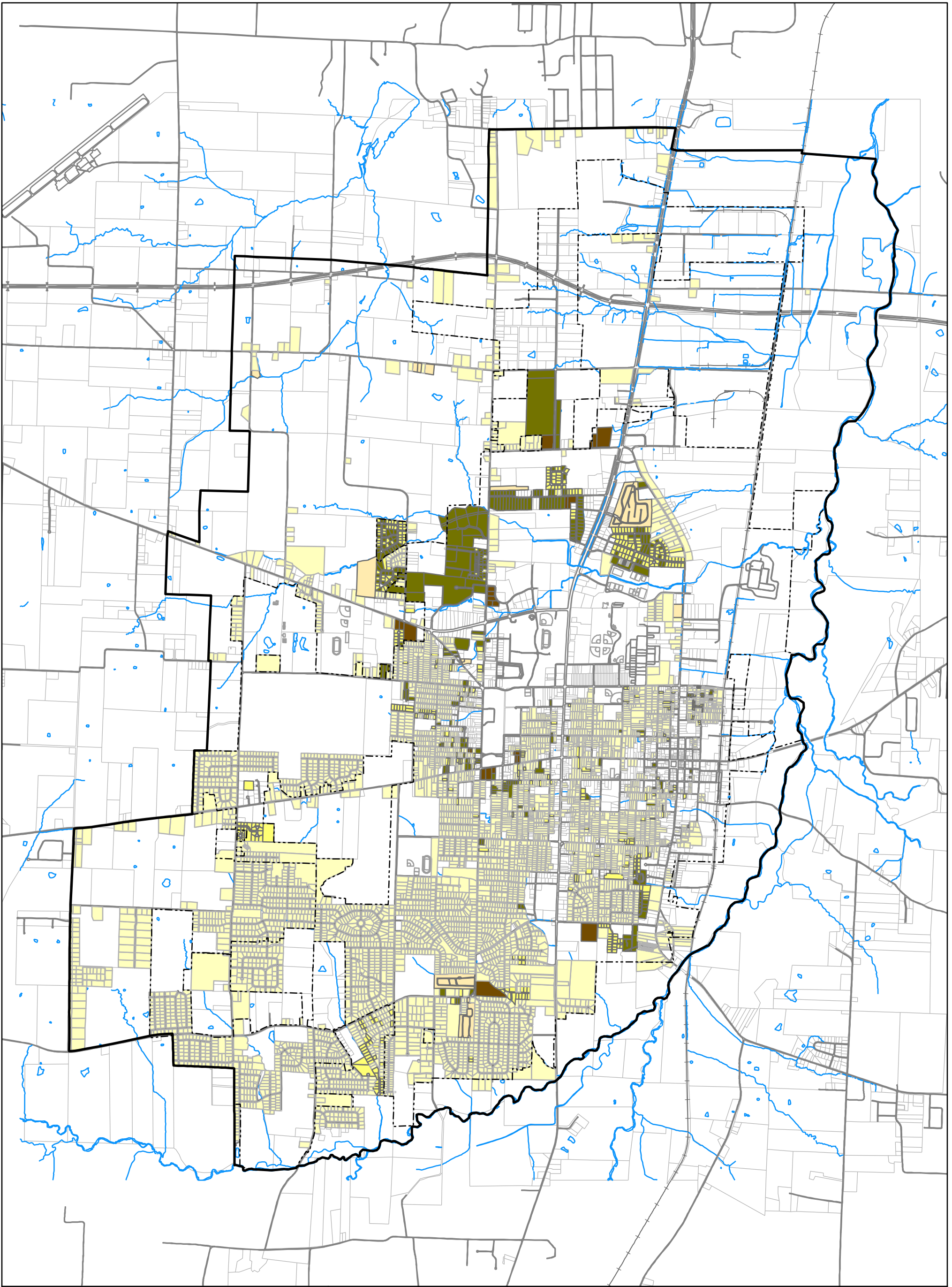
- | | |
|---------------------|----------------------|
| Urban Services Area | Manufactured Housing |
| City Limits | Education |
| Agriculture | Public Use |
| Commercial | Semi-Public Use |
| Single Family | Industrial |
| Two Family | Warehousing |
| Multi Family | Utilities |
| Group Quarters | |








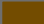

DEPARTMENT OF
PLANNING & ENGINEERING
CITY OF
MURRAY
CALLOWAY COUNTY
KENTUCKY
SEPTEMBER, 2022



1 inch = 3,000 feet
0 500 1,000 2,000 3,000 Feet



LU-2: Existing Residential Land Use

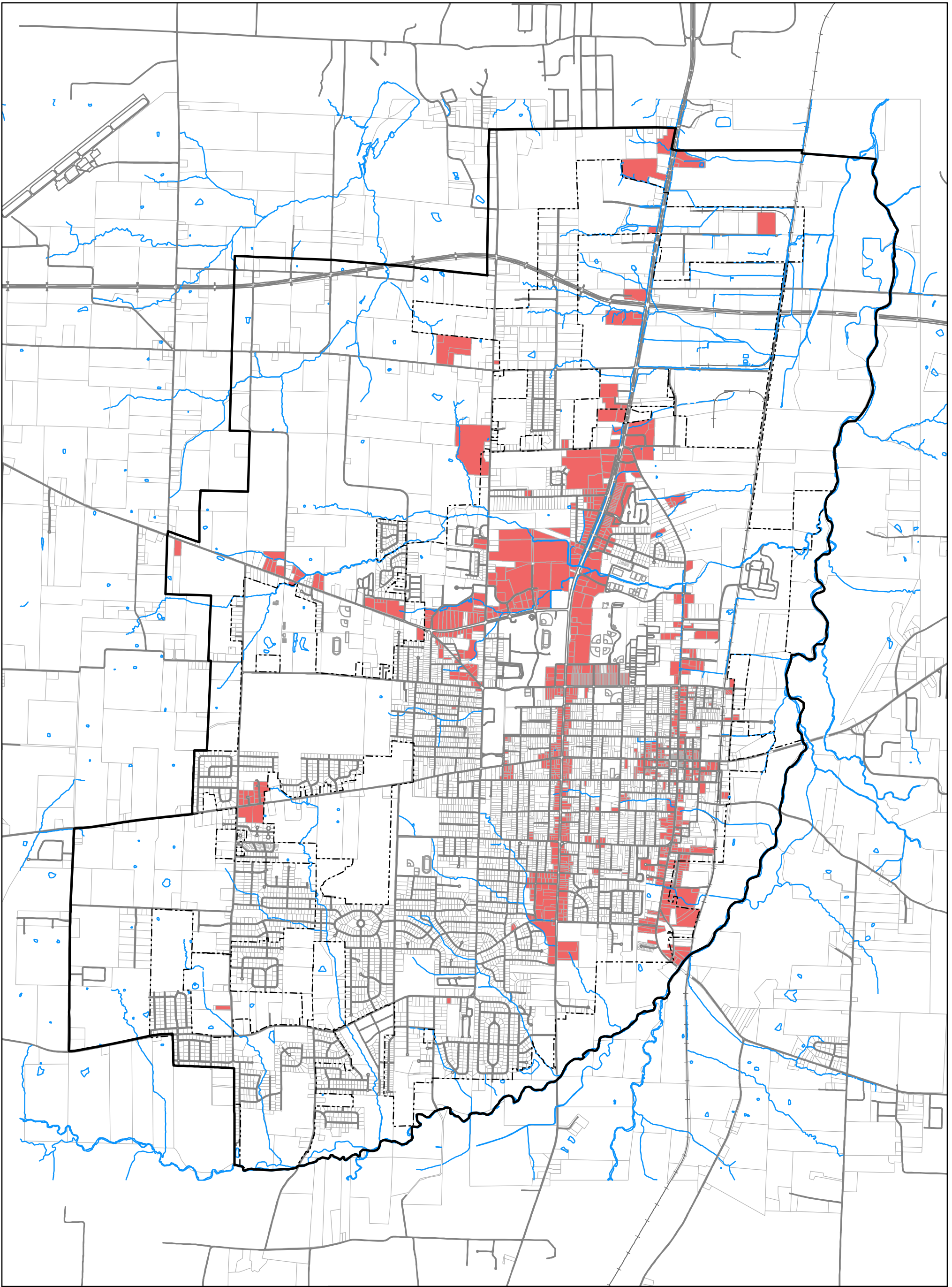
-  Urban Services Area
-  City Limits
-  Single Family
-  Two Family
-  Multi Family
-  Group Quarters
-  Manufactured Housing






DEPARTMENT OF
PLANNING & ENGINEERING
CITY OF
MURRAY
CALLOWAY COUNTY
KENTUCKY
SEPTEMBER, 2022



1 inch = 3,000 feet
0 500 1,000 2,000 3,000 Feet



LU-3: Existing Commercial Land Use

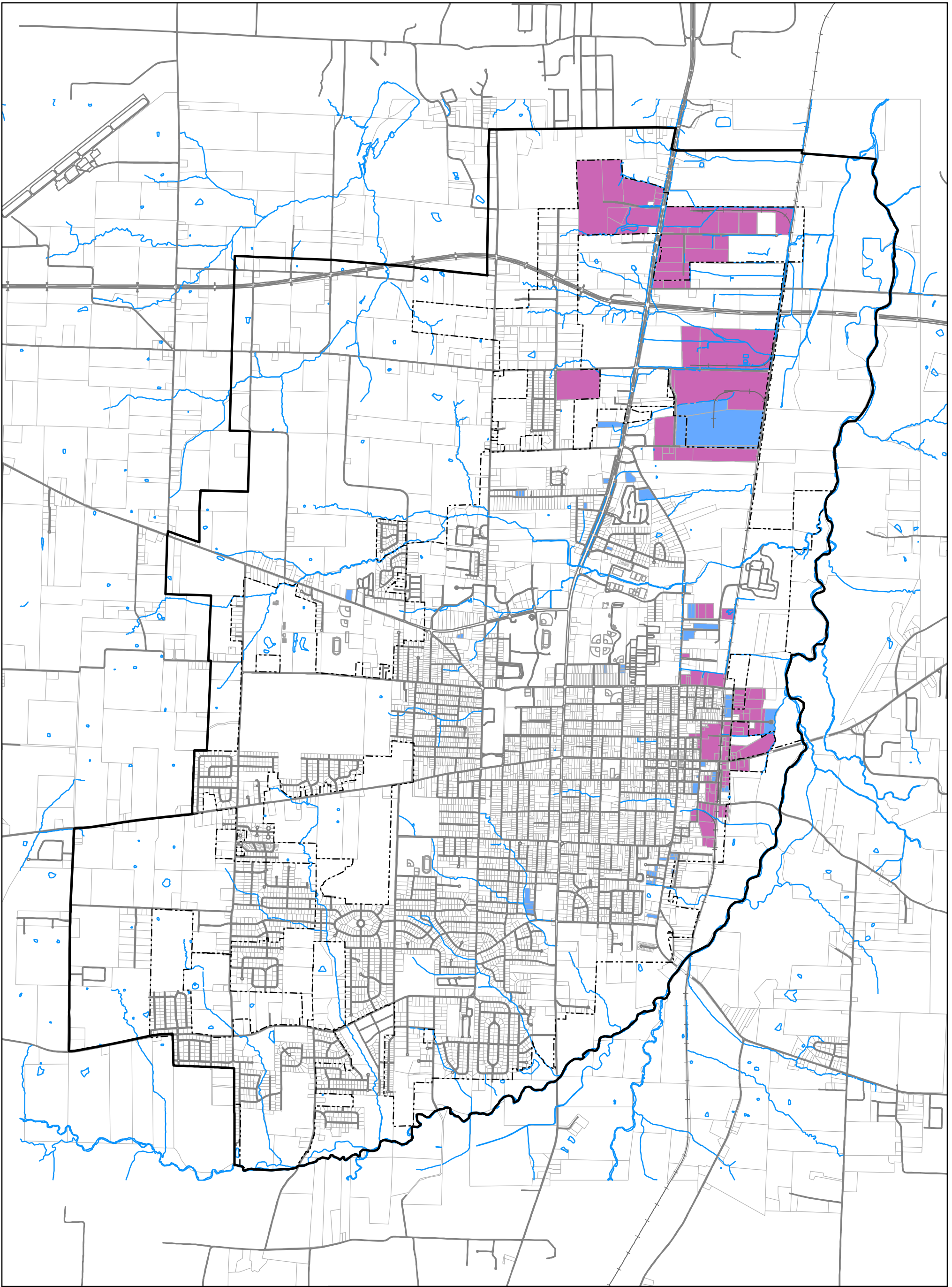
-  Urban Services Area
-  City Limits
-  Commercial







DEPARTMENT OF
PLANNING & ENGINEERING
CITY OF
MURRAY
CALLOWAY COUNTY
KENTUCKY
SEPTEMBER, 2022



1 inch = 3,000 feet
0 500 1,000 2,000 3,000 Feet



LU-4: Existing Industrial and Warehousing Land Use

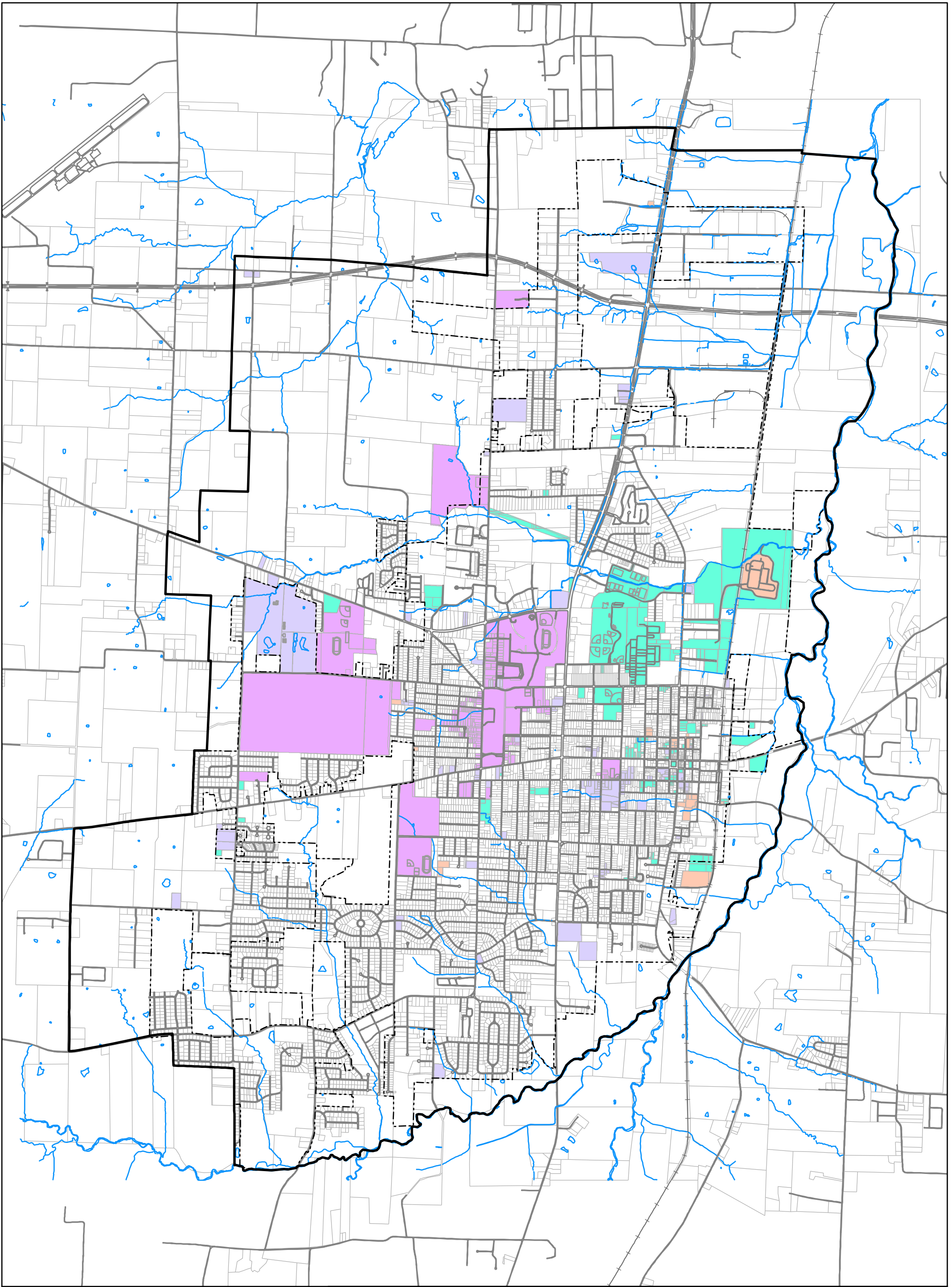
-  Urban Services Area
-  City Limits
-  Warehousing
-  Industrial



1 inch = 3,000 feet
 0 500 1,000 2,000 3,000 Feet









DEPARTMENT OF
 PLANNING & ENGINEERING
 CITY OF
MURRAY
 CALLOWAY COUNTY
 KENTUCKY
 SEPTEMBER, 2022



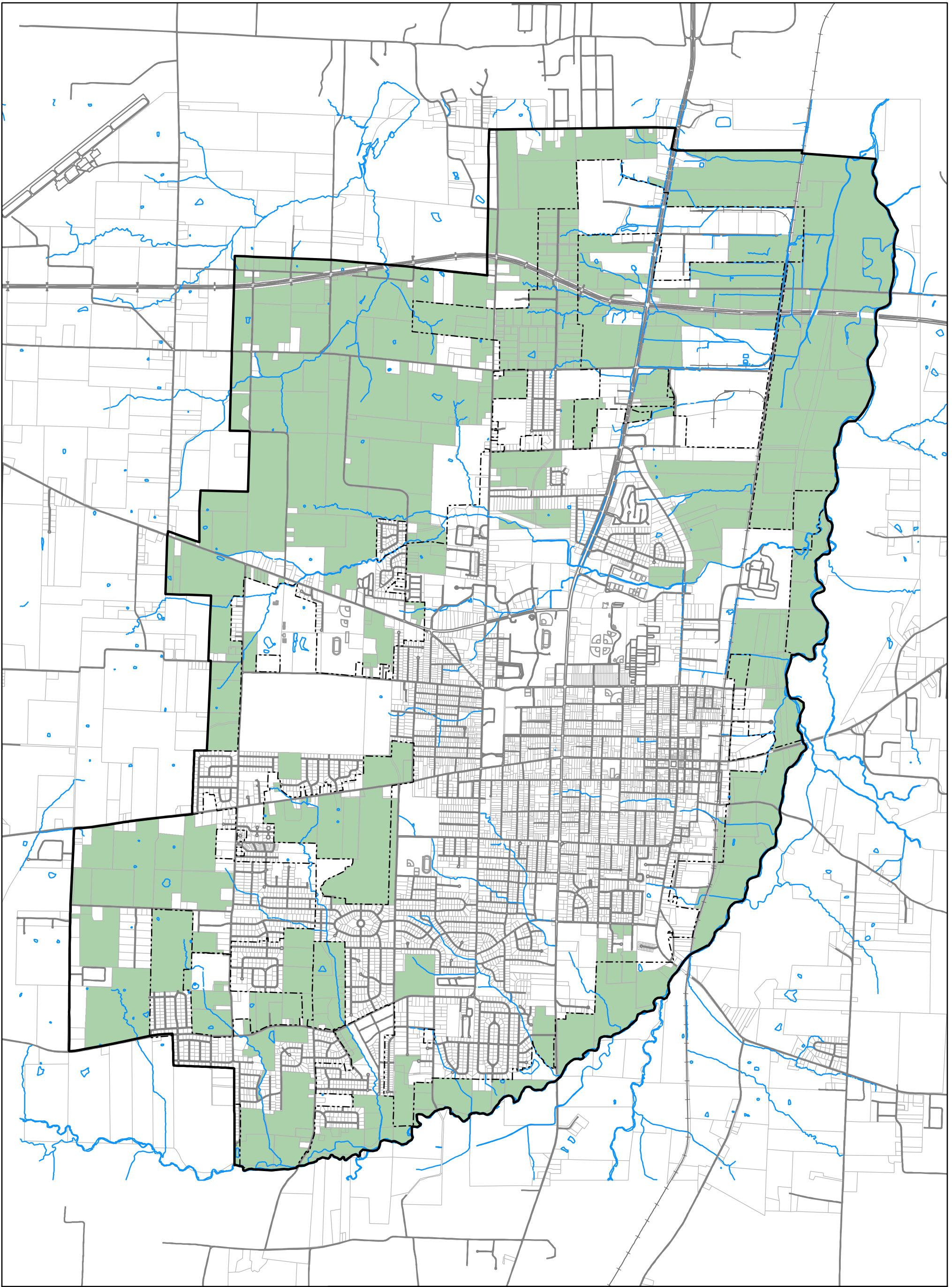
DEPARTMENT OF
PLANNING & ENGINEERING
CITY OF
MURRAY
CALLOWAY COUNTY
KENTUCKY
SEPTEMBER, 2022

LU-5: Existing Public/ Education/ Utilities Land Use

-  Urban Services Area
-  City Limits
-  Public Use
-  Semi-Public Use
-  Education
-  Utilities






1 inch = 3,000 feet
0 500 1,000 2,000 3,000 Feet



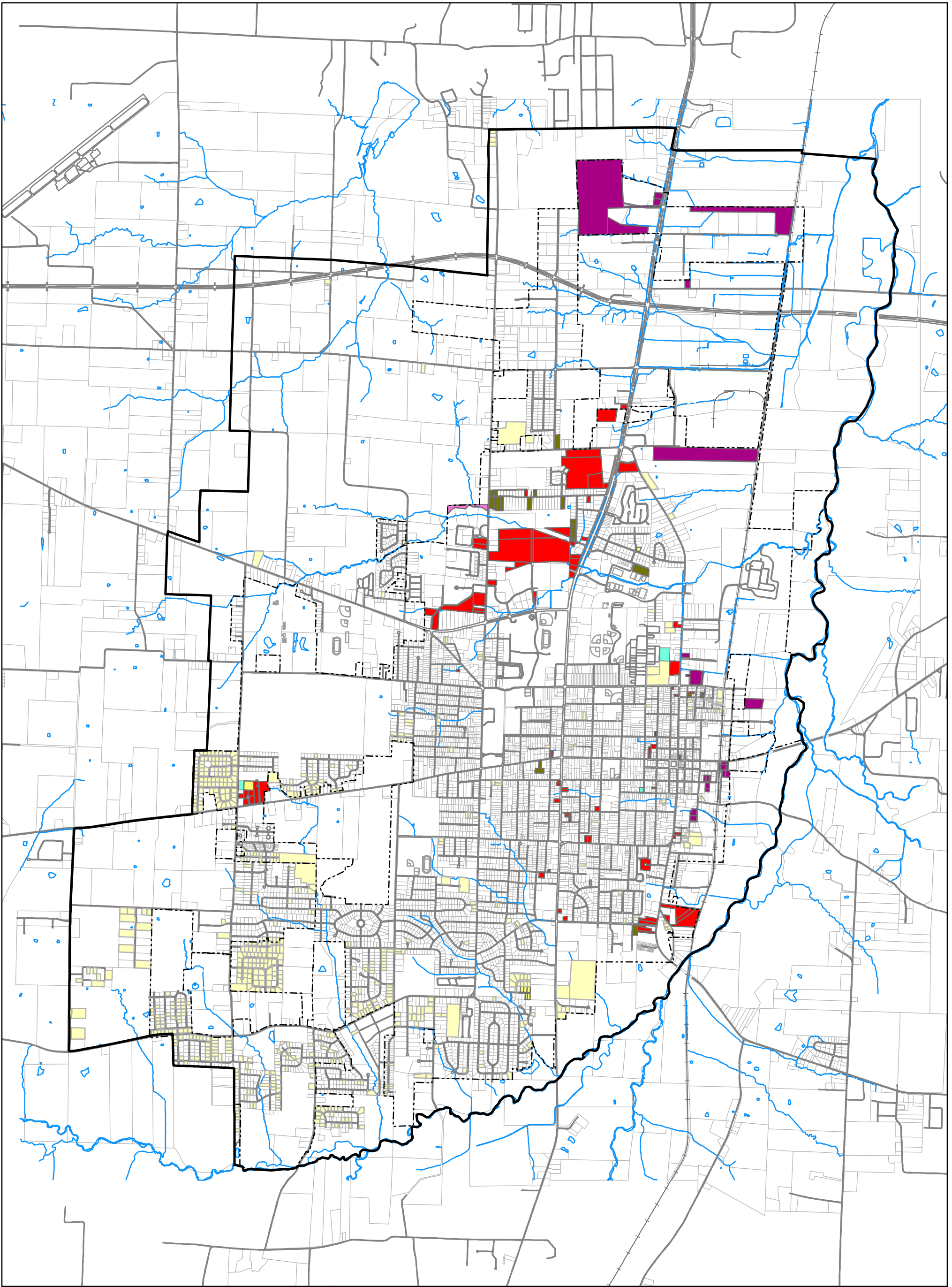
DEPARTMENT OF
PLANNING & ENGINEERING
CITY OF
MURRAY
CALLOWAY COUNTY
KENTUCKY
SEPTEMBER, 2022

LU-6: Existing Agricultural Land Use

-  Urban Services Area
-  City Limits
-  Agriculture



1 inch = 3,000 feet
0 500 1,000 2,000 3,000 Feet



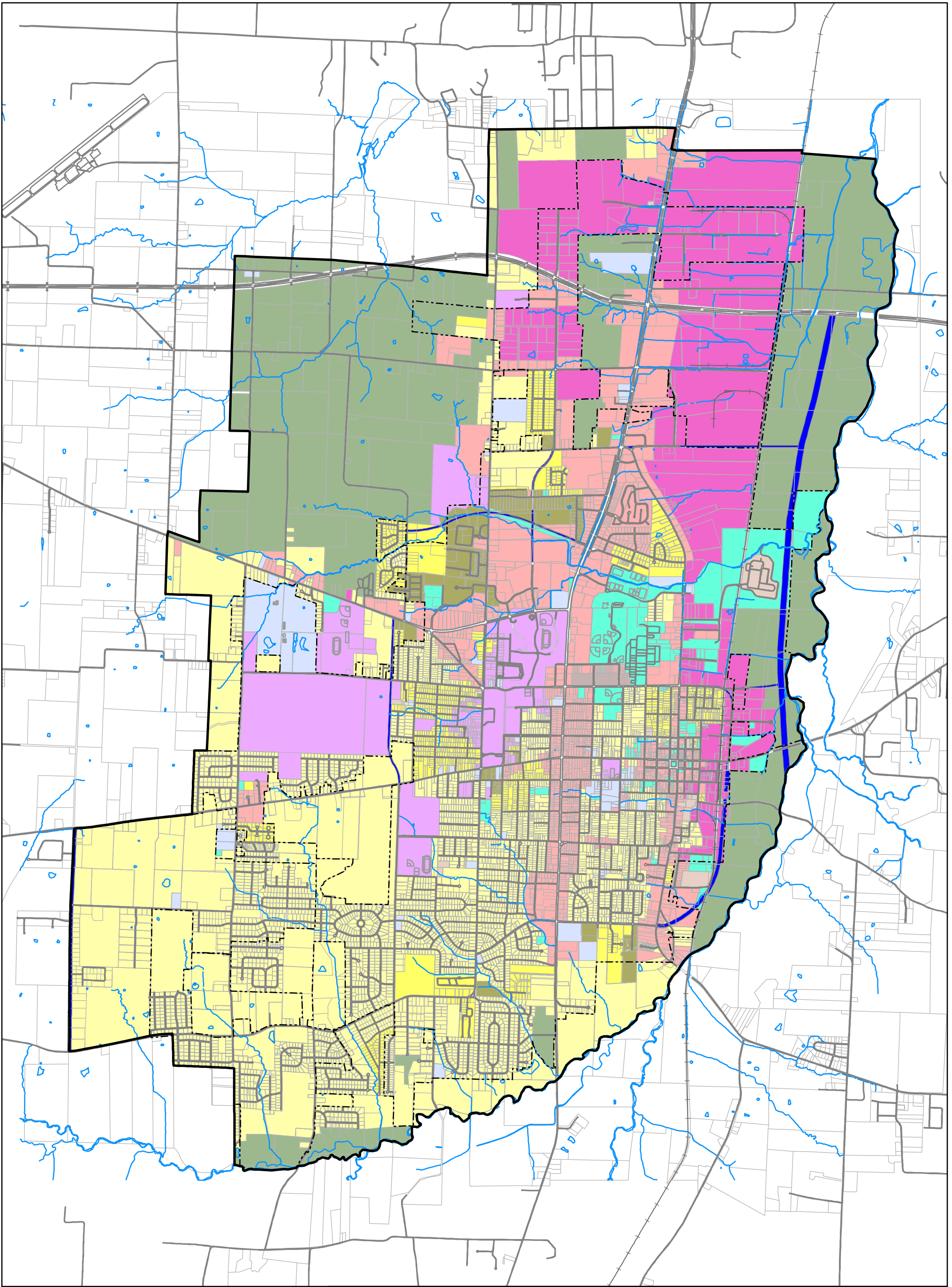
DEPARTMENT OF
PLANNING & ENGINEERING
CITY OF
MURRAY
CALLOWAY COUNTY
KENTUCKY
SEPTEMBER, 2022

LU-7: Vacant Land

- | | |
|-----------------------|----------------------|
| — Urban Services Area | Manufactured Housing |
| - - - City Limits | Education |
| ■ Agriculture | Public Use |
| ■ Commercial | Semi-Public Use |
| ■ Single Family | Industrial |
| ■ Two Family | Warehousing |
| ■ Multi Family | Utilities |
| ■ Group Quarters | |



1 inch = 3,000 feet
0 500 1,000 2,000 3,000 Feet



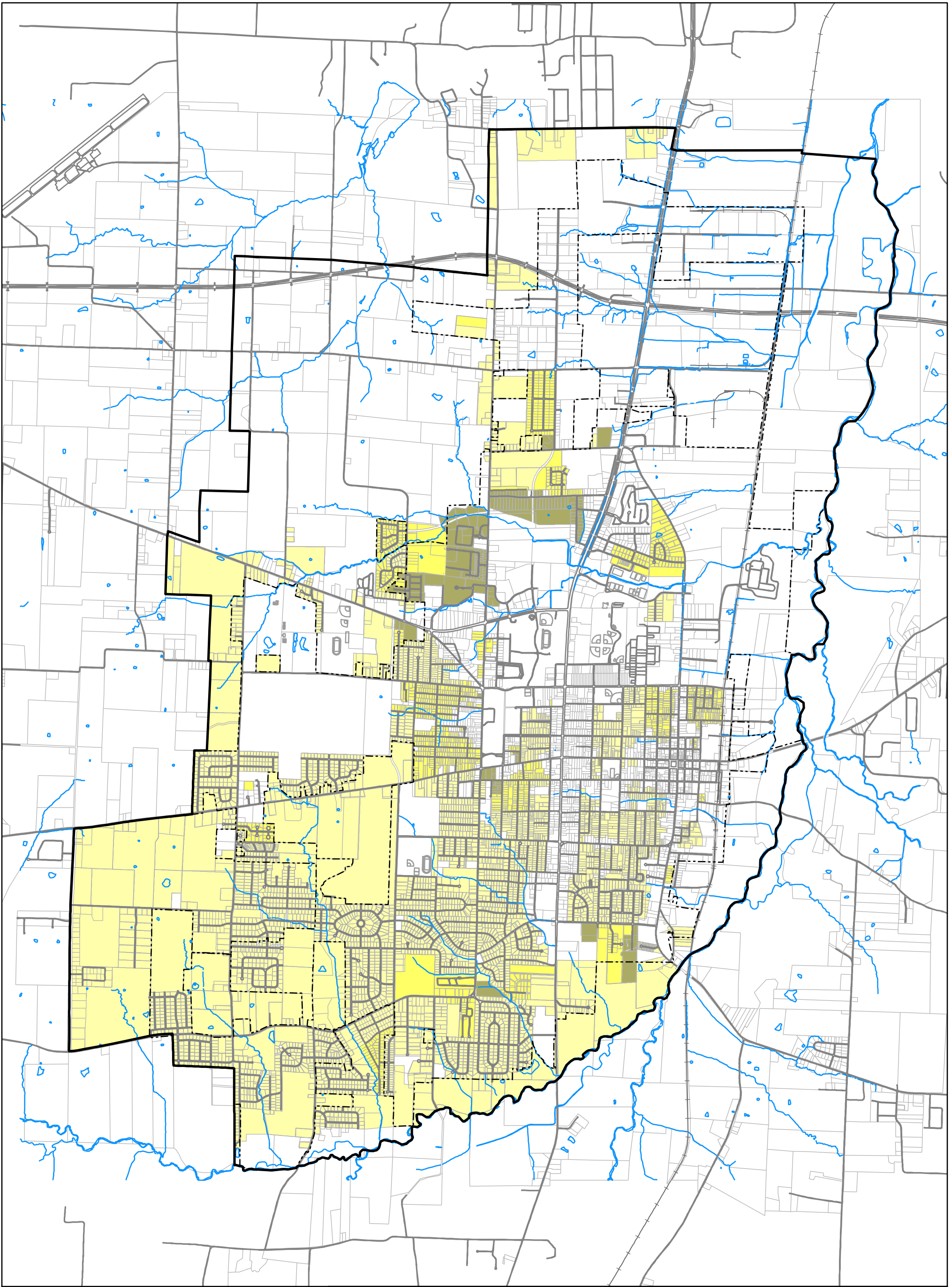
DEPARTMENT OF
PLANNING & ENGINEERING
CITY OF
MURRAY
CALLOWAY COUNTY
KENTUCKY
SEPTEMBER, 2022

LU-8: Future Land Use

- | | |
|----------------------------|---------------------------------|
| Urban Services Area | Education |
| City Limits | Public Use (Governmental) |
| Agriculture | Semi-Public Use (Institutional) |
| Commercial | Industrial |
| Low Density Residential | Transportation |
| Medium Density Residential | Utilities |
| High Density Residential | |



1 inch = 3,000 feet
0 500 1,000 2,000 3,000 Feet



LU-9: Future Residential Land Use

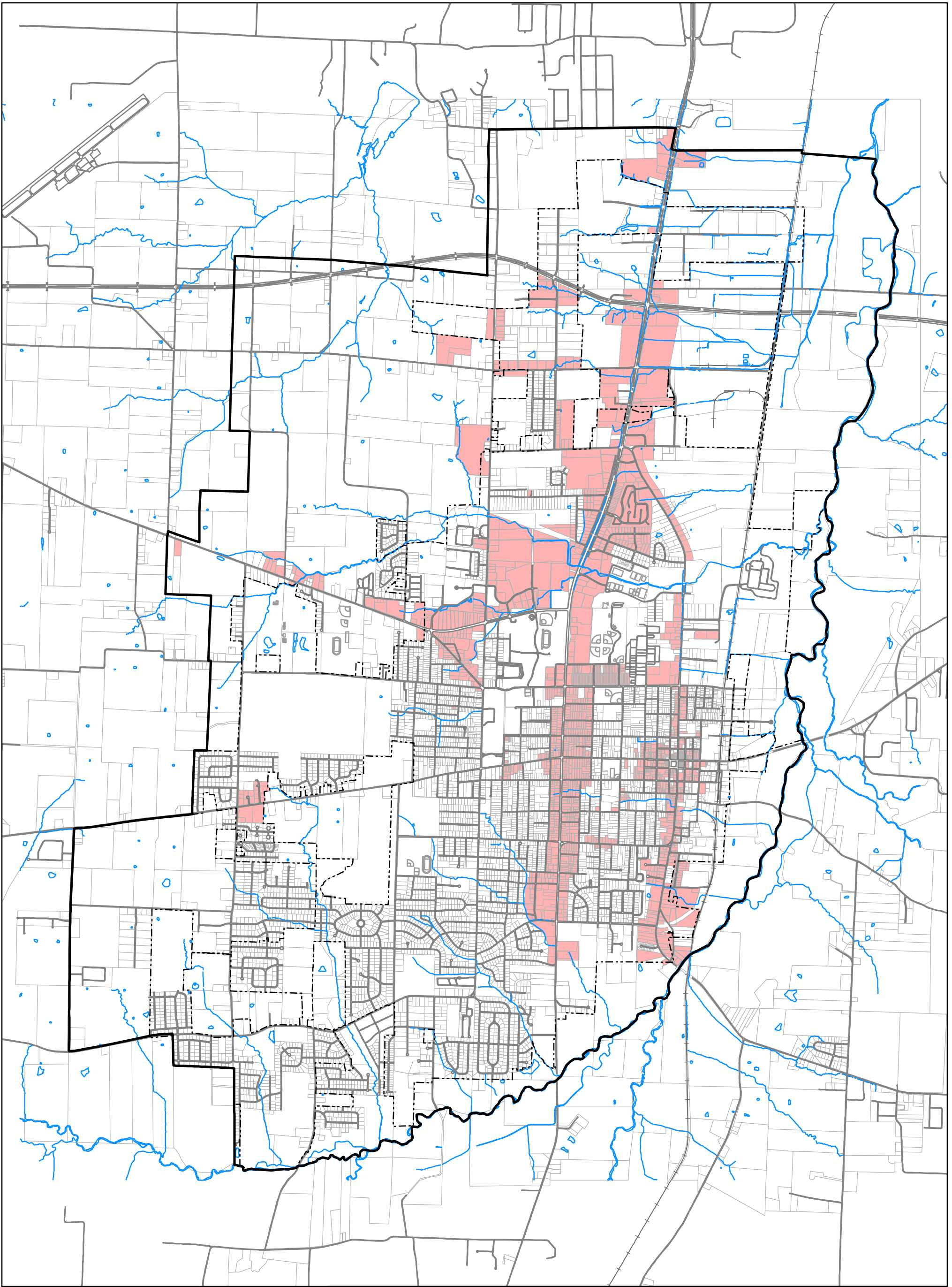
- Urban Services Area
- - - City Limits
- Low Density Residential
- Medium Density Residential
- High Density Residential






DEPARTMENT OF
PLANNING & ENGINEERING
CITY OF
MURRAY
CALLOWAY COUNTY
KENTUCKY
SEPTEMBER, 2022



1 inch = 3,000 feet
0 500 1,000 2,000 3,000 Feet



LU-10: Future Commercial Land Use

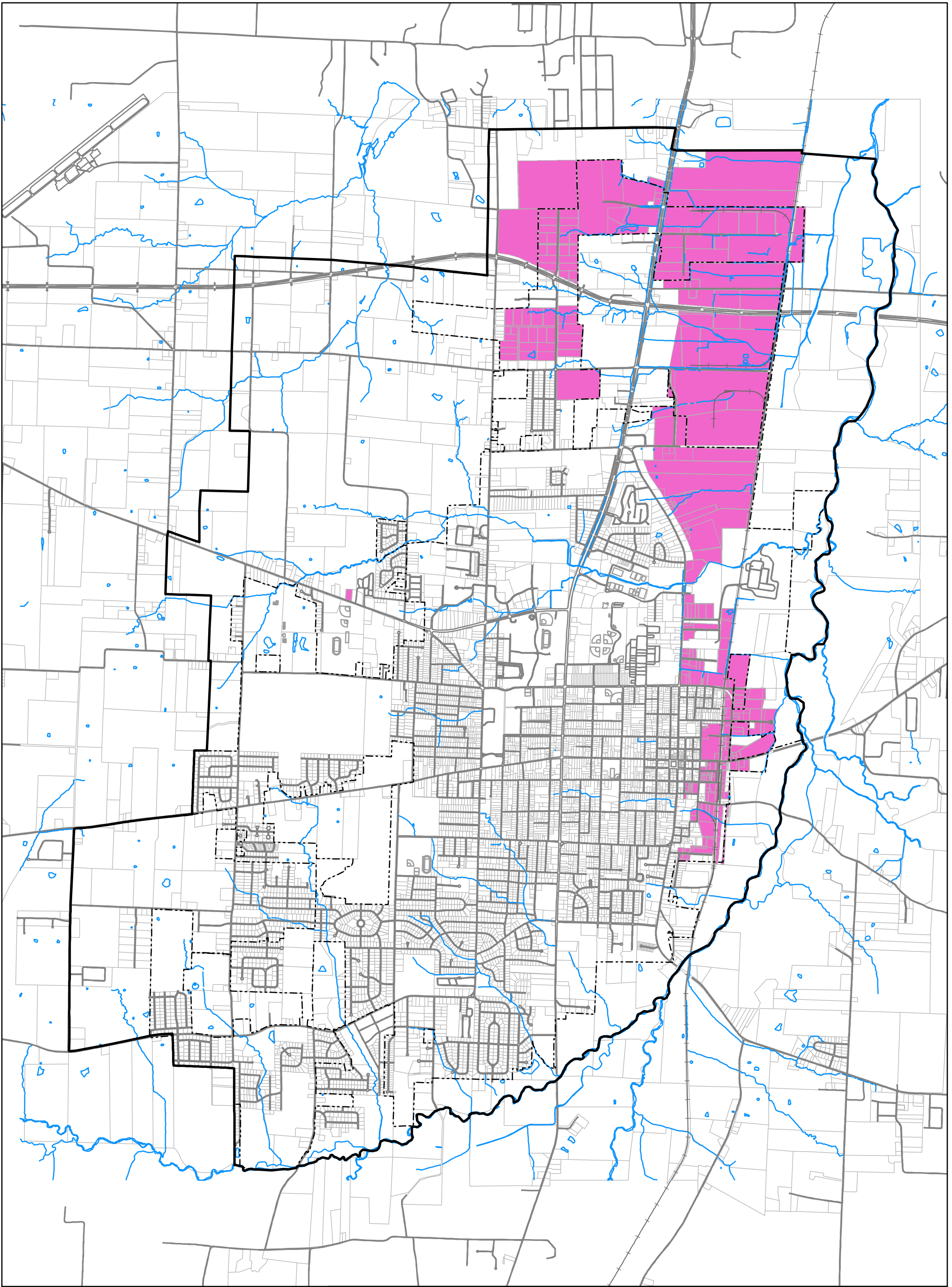
-  Urban Services Area
-  City Limits
-  Commercial






1 inch = 3,000 feet
 0 500 1,000 2,000 3,000 Feet



DEPARTMENT OF
 PLANNING & ENGINEERING
 CITY OF
MURRAY
 CALLOWAY COUNTY
 KENTUCKY
 SEPTEMBER, 2022



LU-11: Future Industrial Land Use

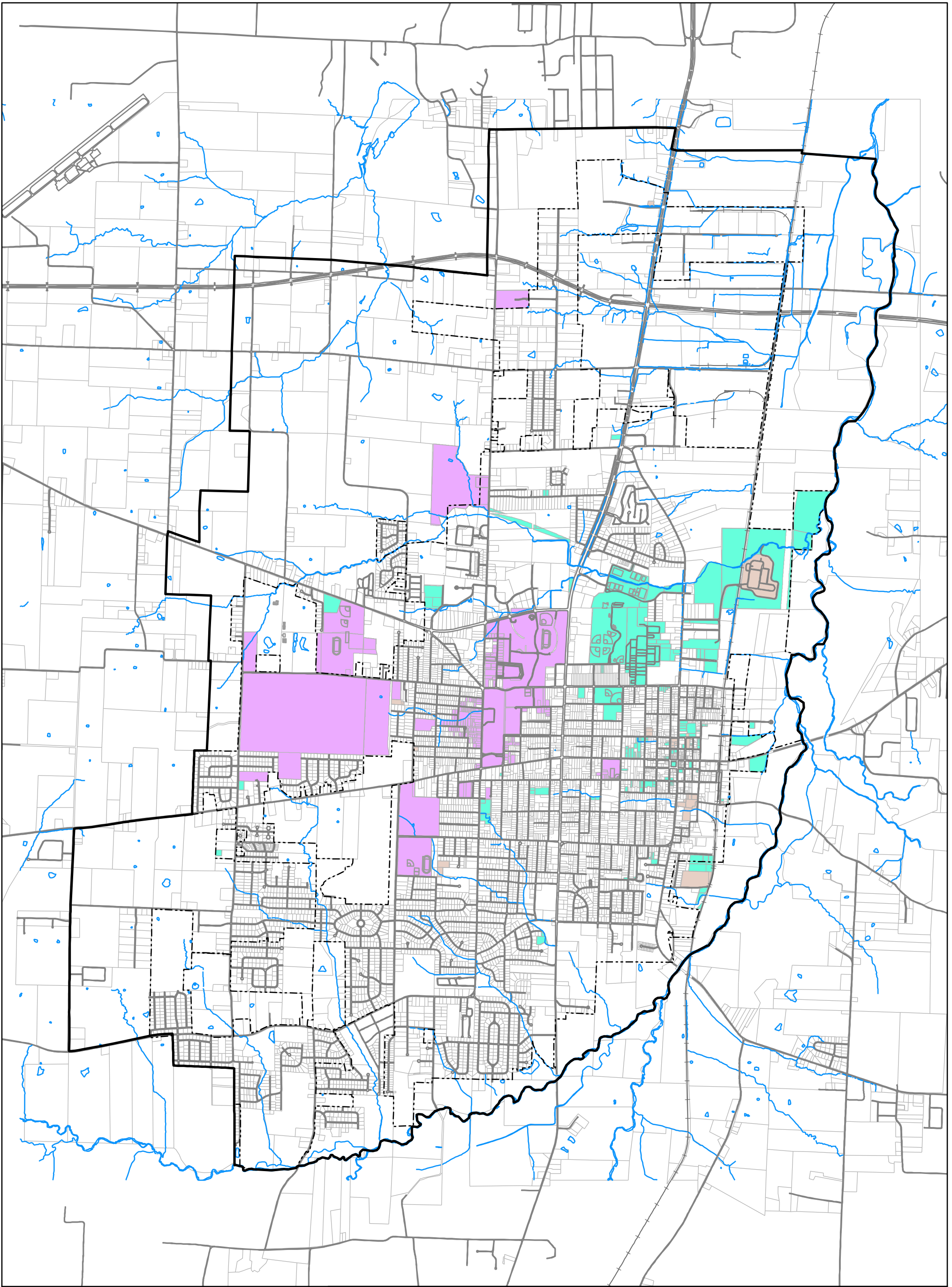
-  Urban Services Area
-  City Limits
-  Industrial








DEPARTMENT OF
PLANNING & ENGINEERING
CITY OF
MURRAY
CALLOWAY COUNTY
KENTUCKY
SEPTEMBER, 2022



1 inch = 3,000 feet
0 500 1,000 2,000 3,000 Feet



LU-12: Future Public / Education / Utilities Land Use

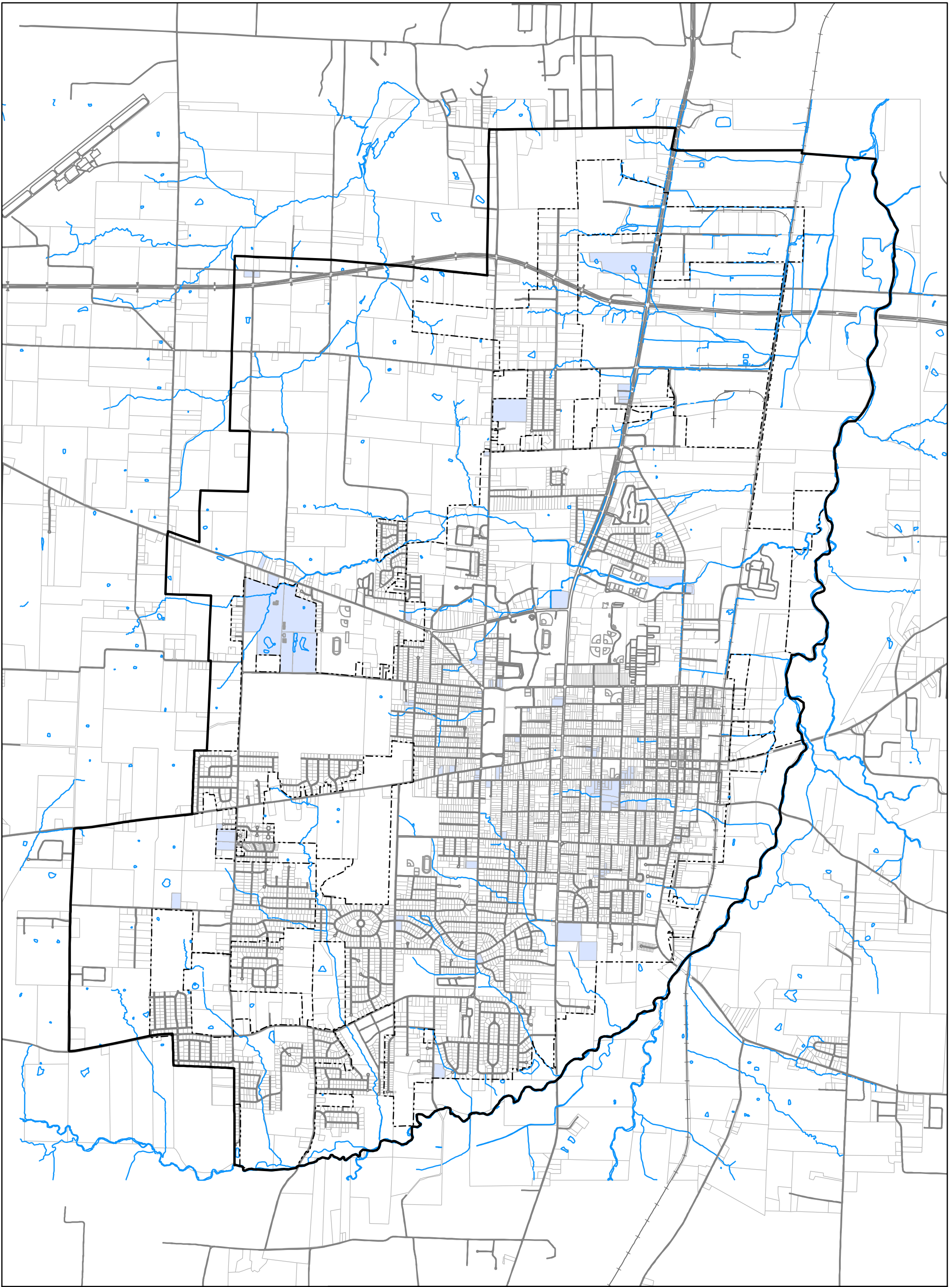
- | | |
|---|---|
|  Urban Services Area |  Education |
|  City Limits |  Utilities |
|  Public Use (Governmental) | |






DEPARTMENT OF
PLANNING & ENGINEERING
CITY OF
MURRAY
CALLOWAY COUNTY
KENTUCKY
SEPTEMBER, 2022



1 inch = 3,000 feet
0 500 1,000 2,000 3,000 Feet



LU-13: Future Semi-Public Land Use

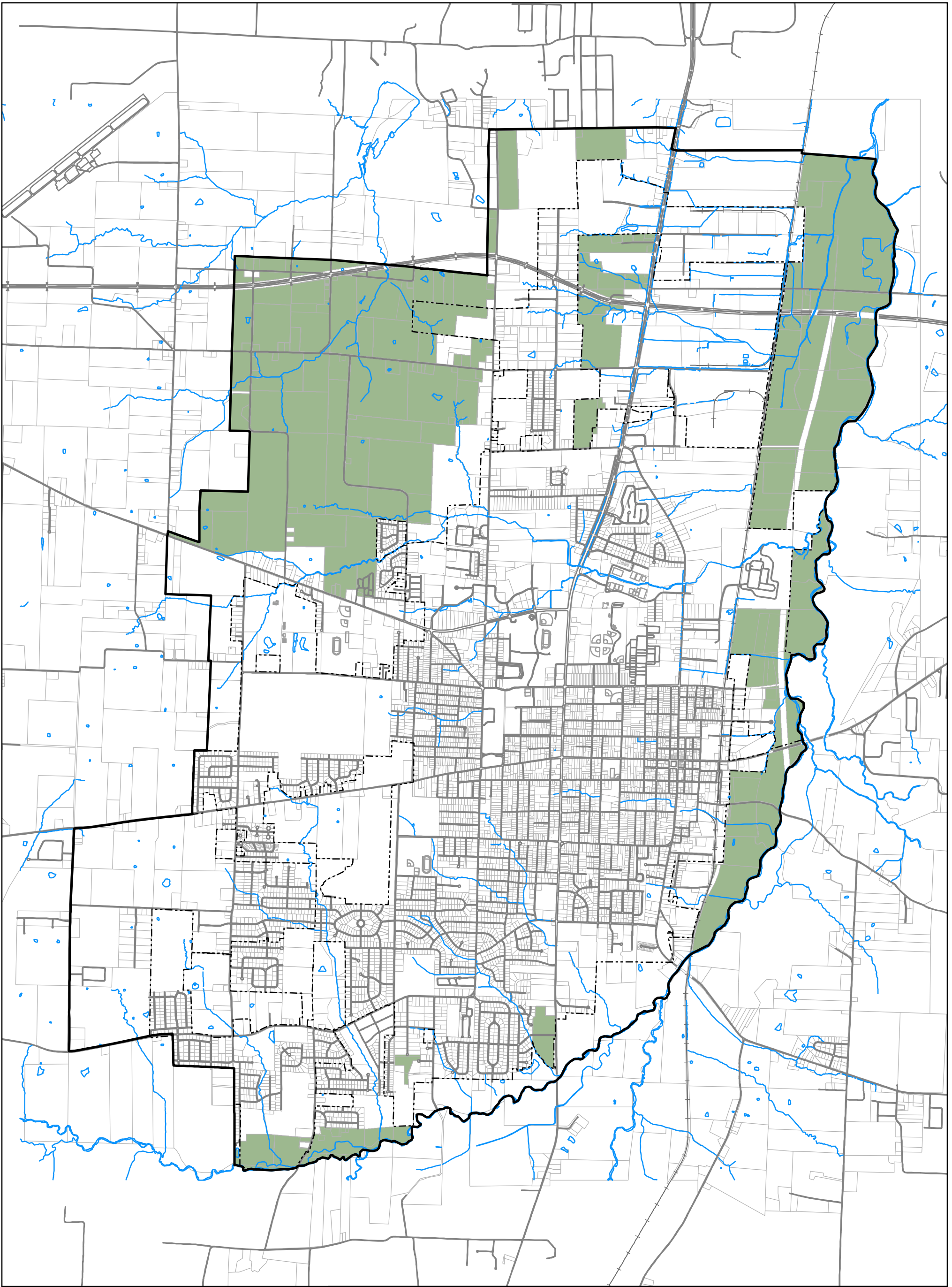
-  Urban Services Area
-  City Limits
-  Semi-Public Use (Institutional)






DEPARTMENT OF
PLANNING & ENGINEERING
CITY OF
MURRAY
CALLOWAY COUNTY
KENTUCKY
SEPTEMBER, 2022



1 inch = 3,000 feet
0 500 1,000 2,000 3,000 Feet



LU-14: Future Agricultural Land Use

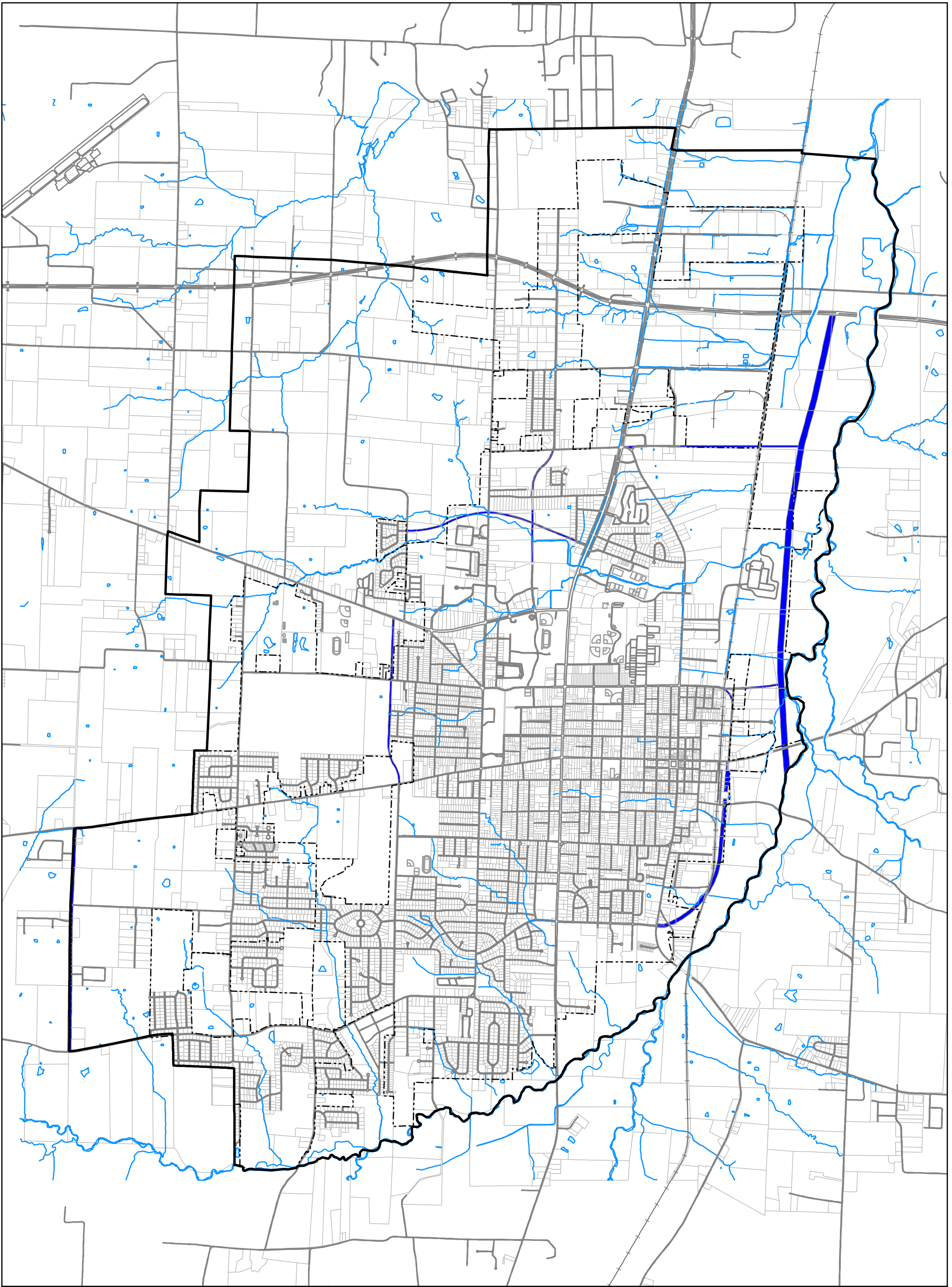
-  Urban Services Area
-  City Limits
-  Agriculture






DEPARTMENT OF
PLANNING & ENGINEERING
CITY OF
MURRAY
CALLOWAY COUNTY
KENTUCKY
SEPTEMBER, 2022



1 inch = 3,000 feet
0 500 1,000 2,000 3,000 Feet



LU-15: Future Transportation Land Use

-  Urban Services Area
-  City Limits
-  Transportation



DEPARTMENT OF
PLANNING & ENGINEERING
CITY OF
MURRAY
CALLOWAY COUNTY
KENTUCKY
SEPTEMBER, 2022



1 inch = 3,000 feet
0 500 1,000 2,000 3,000 Feet