

YES! I would like to sponsor a water sampling site for a stream in my community.

Name _____

Address _____

City _____ State _____

Zip Code _____

Email _____

Phone number _____

Name of stream/county _____

I'd like to sponsor a site for \$100 _____

I'd like to sponsor a new volunteer for \$250 _____

Other donation _____

Your sponsorship or donation is fully tax deductible!

Please make check payable to: **Four Rivers Watershed Watch c/o Jackson Purchase Foundation** and mail attached form to:

Jackson Purchase Foundation
1000 Commonwealth Drive
Mayfield, KY 42066

Thank you so much for helping the volunteers of Watershed Watch to monitor our waterways!

For more information on Four Rivers Watershed Watch or upcoming programs please visit our website:

www.4rww.jpf.org/

Or contact Maggie Morgan:
maggie.morgan@jpf.org
Basin Coordinator for
Jackson Purchase Foundation
(270) 559-4422

Place
Stamp
Here

Four Rivers Watershed Watch



Volunteers answering some simple questions with the tools of science:

**How clean are our waterways?
Are they safe to swim, fish and enjoy?**



Sponsored in part by:



1000 Commonwealth Drive
Mayfield, KY 42055
www.jpf.org

WHO WE ARE...



We are a group of volunteers in the state of Kentucky who are giving their time in an effort to improve our waterways through a coordinated campaign of water quality monitoring, skills development, and advocacy.

Four Rivers Watershed Watch NEEDS YOUR HELP!

The annual cost per site is **\$100** which includes lab costs for samples, replenishment of field test kits, mailing and container costs...

The cost per site for a *new* volunteer is **\$250** which includes new field test kits, lab costs for samples, mailing and container costs...

Would you consider sponsoring a water sampling site in your area?

JUST MAIL THE ATTACHED FORM (SEE BACK PAGE). YOUR SUPPORT WILL ENSURE THE CONTINUED EFFORTS OF FOUR RIVERS WATERSHED WATCH TO MONITOR OUR WATERWAYS.

YOUR SUPPORT IS GREATLY APPRECIATED!

If you would like more information on Watershed Watch, or to find out about volunteer opportunities please visit: <http://www.kywater.org/watch/fourrivers> or <http://4rwwjpf.org> or contact:

**MAGGIE MORGAN, JACKSON PURCHASE
FOUNDATION**

270-559-4422

WATERSHED WATCH IN KENTUCKY

WHAT WE DO...

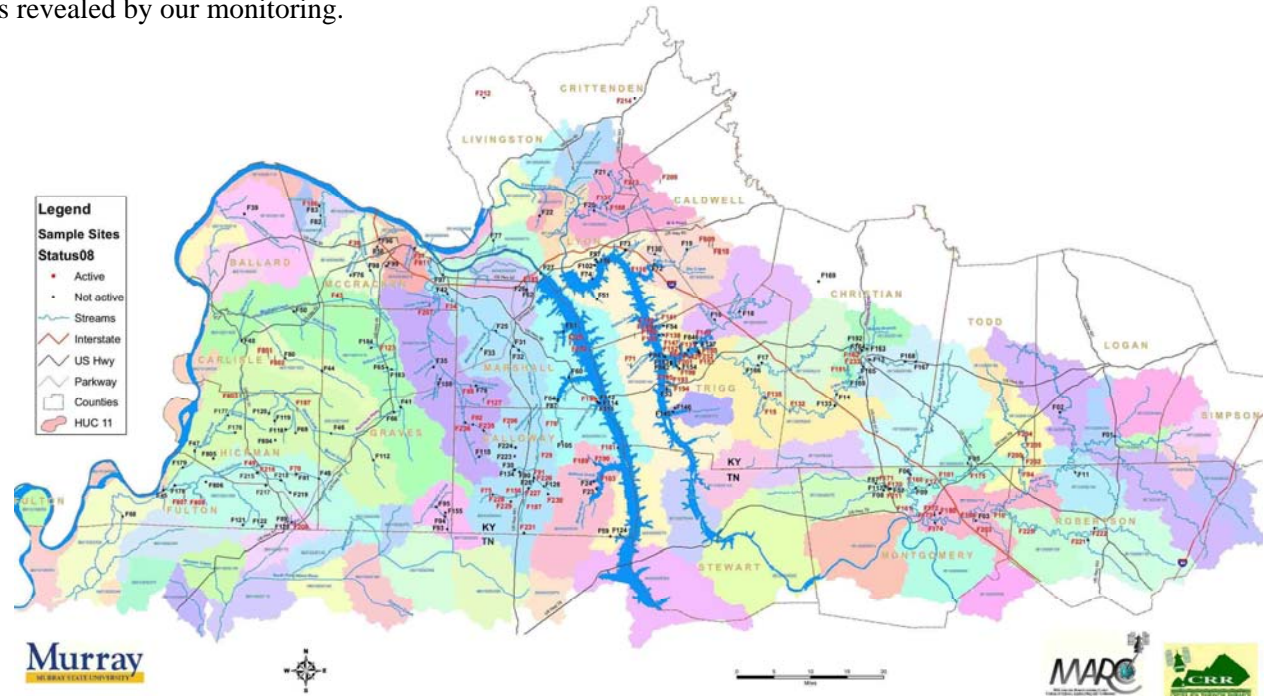
- Last year we conducted **25 training workshops** in basic stream monitoring.
- Our volunteers have collected data at over **2700 stations** over the 10 year history of the program.
- We provide that data to all project participants and any interested party who requests it.
- We provide technical assistance to local watershed groups on dealing with the issues raised by their monitoring and assessment efforts.
- We conduct fall "Watershed Protection Conferences" in each local watershed where individuals, community organizations, scientific researchers and agency personnel all come together to discuss the condition of our waterways as revealed by our monitoring.

WHERE WE ARE GOING...



- Each local watershed steering committee develops its own goals and operational plans based on the needs in its communities and unique conditions in its waterways.
- What we do best is deliver science to the people, then deliver the people to the water's edge. There they learn first hand the condition of their streams, who in their community shares their concerns and the power they have to effect change.

HERE ARE THE SITES WE MONITOR:



**PLEASE CONSIDER SPONSORING WATER
SAMPLING COSTS!**